







## Observations

<b>Crew:</b>	Nevan L	<b>Survey Date:</b>	Sample
<b>Survey Customer:</b>	Sample		
<b>Job Ref:</b>	Sample		
<b>Survey Address:</b>	Sample		
<b>Start:</b>	0 ft	<b>Finish:</b>	1370 ft
<b>Direction:</b>	Downhole		
		<b>Size:</b> 5-1/2"	

Position	Code	Description/Remarks	Grade	Photo
54' 6"		Adjust footage counter at collar		
500' 0"		Good casing condition		
715' 0"		Adjust footage counter at collar		
1000' 0"		Good casing condition		
1283' 0"		Adjust footage counter at collar		
1332' 10"		Top perforation		

1333' 0"

Perforations



1334' 0"

Plugged perforation



1334' 9"

Perforations



1336' 0"

Perforations



1337' 0"

Plugged perforation



1337' 8"

Perforations



1338' 9"

Plugged perforation



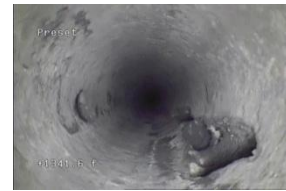
1341' 9"

Hole in casing



1342' 0"

Hole in casing



1342' 0"

Hole in casing



1342' 4"

Large hole in casing



1342' 7"

Large hole in casing



1342' 9"

Hole in casing



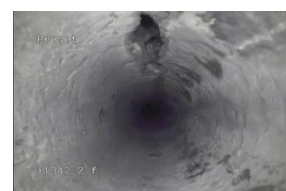
1342' 10"

Large hole in casing



1343' 0"

Large hole in casing



1343' 2"

Large hole in casing



1343' 4"

Large hole in casing



1343' 7"

Large hole in casing



1344' 10"

Large hole in casing



1345' 0"

Perforations



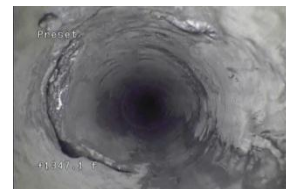
1345' 10"

Perforations



1348' 0"

Hole in casing



1348' 2"

Hole in casing



1352' 8"

Hole in casing



1365' 0"

Obstruction in well



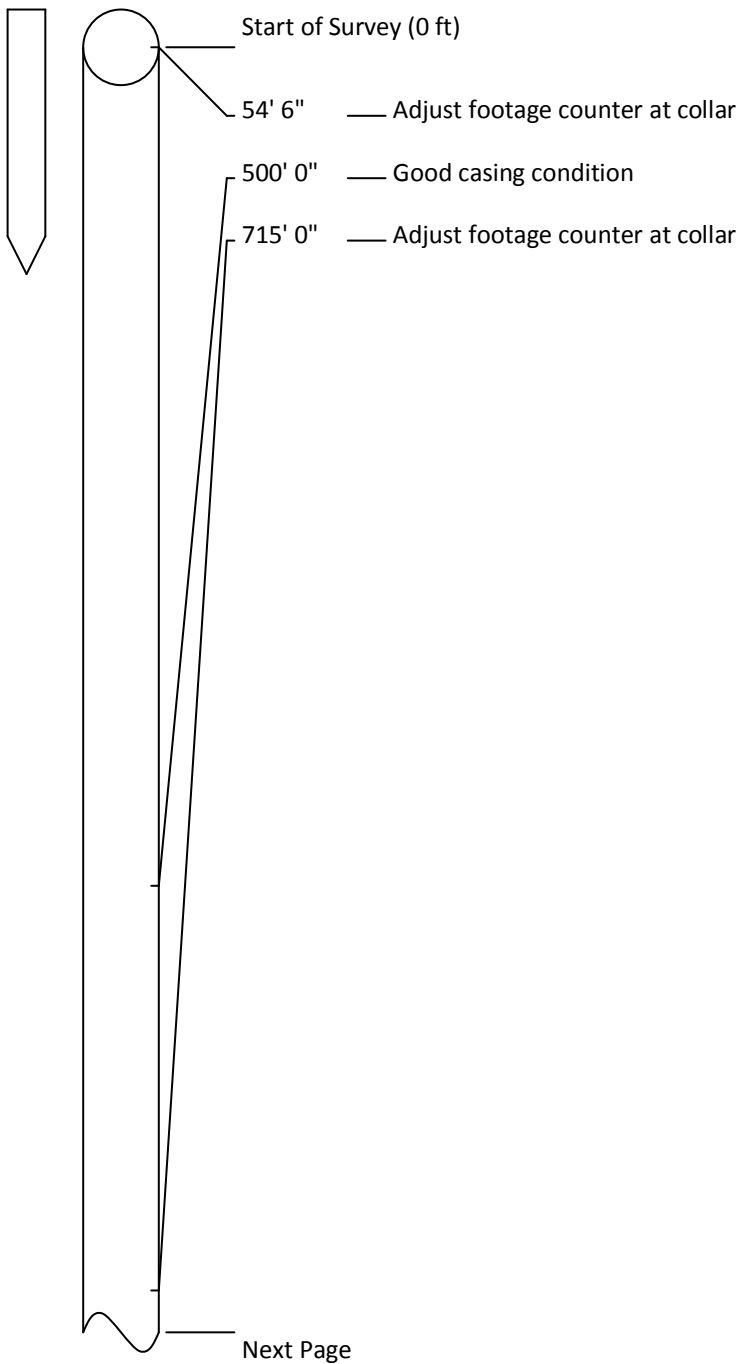
1365' 6"

Obstruction in well



# Observations

<b>Crew:</b>	Nevan L	<b>Survey Date:</b>	Sample
<b>Survey Customer:</b>	Sample		
<b>Job Ref:</b>	Sample		
<b>Survey Address:</b>	Sample		
<b>Start:</b>	0 ft	<b>Finish:</b>	1370 ft
<b>Direction:</b>	Downhole		
		<b>Size:</b> 5-1/2"	





Previous Page

- 1000' 0" — Good casing condition
- 1283' 0" — Adjust footage counter at collar
- 1332' 10" — Top perforation
- 1333' 0" — Perforations
- 1334' 0" — Plugged perforation
- 1334' 9" — Perforations
- 1336' 0" — Perforations
- 1337' 0" — Plugged perforation
- 1337' 8" — Perforations
- 1338' 9" — Plugged perforation
- 1341' 10" — Hole in casing
- 1342' 0" — Hole in casing
- 1342' 4" — Large hole in casing
- 1342' 7" — Large hole in casing
- 1342' 9" — Hole in casing
- 1342' 10" — Large hole in casing
- 1343' 0" — Large hole in casing
- 1343' 2" — Large hole in casing
- 1343' 4" — Large hole in casing
- 1343' 7" — Large hole in casing
- 1344' 10" — Large hole in casing
- 1345' 0" — Perforations
- 1345' 10" — Perforations
- 1348' 0" — Hole in casing
- 1348' 2" — Hole in casing
- 1352' 8" — Hole in casing
- 1365' 0" — Obstruction in well
- 1370' 0" — End of Survey (1370 ft)

